



RESOLUTION NO. 2020-12-14-1

A RESOLUTION IN SUPPORT OF THE PERMIAN BASIN METROPOLITAN PLANNING ORGANIZATION'S PROJECTS IN THE 2022 TXDOT UNIFIED TRANSPORTATION PROGRAM

WHEREAS, pursuant to federal law, the Governor of the State of Texas designated the Permian Basin Metropolitan Planning Organization (PBMPO) as the Metropolitan Planning Organization for the Midland - Odessa region; and

WHEREAS, PBMPO's Policy Board is the entity for cooperative decision making regarding regional transportation issues in portions of Midland, Ector and Martin Counties; and including the cities of Midland and Odessa; and

WHEREAS, the Texas Department of Transportation (TxDOT) is a valuable partner in planning for and implementing the region's mobility needs; and

WHEREAS, TxDOT's Unified Transportation Program (UTP) is a 10-year planning guide for transportation project development and construction that is updated annually; and funding category allocations for the 2022 UTP include input from Metropolitan Planning Organizations and other stakeholders; and

WHEREAS, the 2022 UTP includes funding sources such as TxDOT Category 2 funds made available for MPO project funding; additional funding provided through the federal FAST Act transportation bill; for metropolitan and rural areas in the state; and funding for the state's connectivity corridors; and

WHEREAS, projects shown in Attachment "A" are part of this Resolution and were selected using the PBMPO's approved project selection process and have been supported through the Permian Basin MPO's public involvement process. The projects listed are intended to maximize the use of available funding by leveraging additional funding sources.

NOW, THEREFORE BE IT RESOLVED that the Permian Basin Metropolitan Planning Organization's Policy Board recommends the attached list of regional projects to be included in the TxDOT FY 2022-2031 UTP, leveraging MPO directed funding from Category 2 and Commission directed funding in Categories 4 and 12.

PASSED AND APPROVED this 14th day of December 2020.

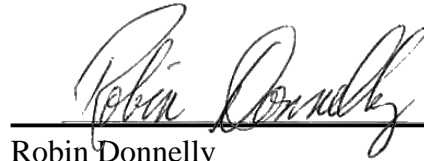


Debi Hays, Chairperson

Jack Ladd, Jr., Vice-Chairperson



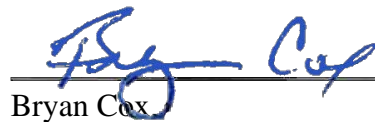
Tom Sprawls



Robin Donnelly



John Speed, P.E.



Bryan Cox



Doug Provance

Rank	MTP Location	Project ID	TxDOT CSJ	County	Road Name	From To	Description	Cost Est.	#1 Traffic Count (AADT)	#2 Congestion (TTI)	#3a Regional Thoroughfare Plan (RTP)	#3b RTP Classification	#4 NHS	#5 Bus Route	#6 Safety (Crash Rate)	#7 Resiliency	#8 Connect Alt. Mode	#9 Include Alt. Mode	#10 24 HR Truck Count (Freight)	#11 Economic Dev.	#12 Alt. Funding	#13 Travel & Tourism	#14 Socio Econ. Effect	#15 NEPA Assist	#16 MS4	TOTAL
1	N/A	--		Midland	SH 158	CR 120	Intersection improvement	4	1	1	1	3	3	0	20	5	0	0	15	10	5	0	5	2	0	71
2	N/A	RC-151/RC-152/RC-153/RC-154		Ector	42nd/SH191	Loop 338 E interchange to Loop 338 W	Access Management	6	4	1	1	3	3	2	15	5	2	0	5	10	5	5	5	2	3	71
3	FC	RC-232		Midland	BS 158 (Andrews Hwy)	At FM 868 (Midland Dr)	Intersection Improvements; Corridor Capacity Improvements	3.6	3	1	1	3	3	2	15	5	0	0	5	15	0	5	5	2	3	68
4	FC	RC-234	0463-02-080	Midland	SH 158	Wadley	Signal and Construct Intersection	3.6	1	1	1	4	3	0	5	5	2	3	5	15	5	5	5	2	3	65
5	FC	RC-137		Midland	BI 20	At CR 1250	Reconfigure offset at railroad tracks	6	0	1	1	4	3	0	15	5	0	0	5	15	5	0	5	2	3	64
6	N/A	--		Ector	I-20	N IH 20 Service Road/Murphy Street to IH 20/Moss Ave	Install traffic signal at the intersection	0.75	3	2	1	3	4	0	10	5	0	0	10	10	5	0	5	2	0	60
7	U	RC-235		Midland	BI-20 (Wall St)	At Avalon Dr	Intersection Improvements, New Signalized Intersection	3	-	1	1	4	3	0	10	5	0	0	5	15	5	0	5	2	3	59
8	N/A	--		Ector	FM 1882	From 2nd St to 42nd St	Access Management	6	2	1	1	3	2	2	5	5	2	0	5	10	5	5	5	2	3	58
9	FC	RC-236	0463-02-079	Midland	SH 158	CR 60/Brianwood	Signal and Reconstruct Intersection	3.6	1	0	1	3	3	0	5	5	0	0	10	15	5	0	5	2	0	55

Total = \$36.55

* U - Unfunded Project List

* FC - Fiscally Constrained Project List

FY 2021 UTP Projects

UTP Location	County	Highway	Project Name/Project ID (CSJ Number)	From	To	Est Let Date Range	Construction Cost Estimate	CAT 2 2021	CAT 2 2022
10	Ector	SL 338	Interchange at 52nd/56th - Odessa 2224-01-116	At 52nd/56th Interchange	-	FY 2025-2030	\$28.00	2.5	3
11	Ector	SL 338	Upgrade to Freeway - Odessa 2224-01-117	Yukon Rd E	US 385 N	FY 2025-2030	\$19.60	2.5	2
17	Midland	SH 191	Interchange at Yukon Rd - Odessa 2296-02-026	At Yukon Rd	-	FY 2021-2024	\$18.56	6.56	6.56
18	Midland	SL 250	Interchange at Todd Rd - Midland 1188-02-111	At Todd Rd	-	FY 2025-2030	\$21.12	2.5	2

Total = \$14.06

\$13.56

GRAND TOTAL = \$50.11 (M)

ESTIMATED FUNDING - \$50.21 (M)

PERMIAN BASIN MPO

LOW-COST PROJECTS

EZRIDER



**Permian Basin
MPO**
Metropolitan
Planning
Organization

The right place in Texas®
Odessa

MIDLAND
Feel the Energy!



**Texas
Department
of Transportation**



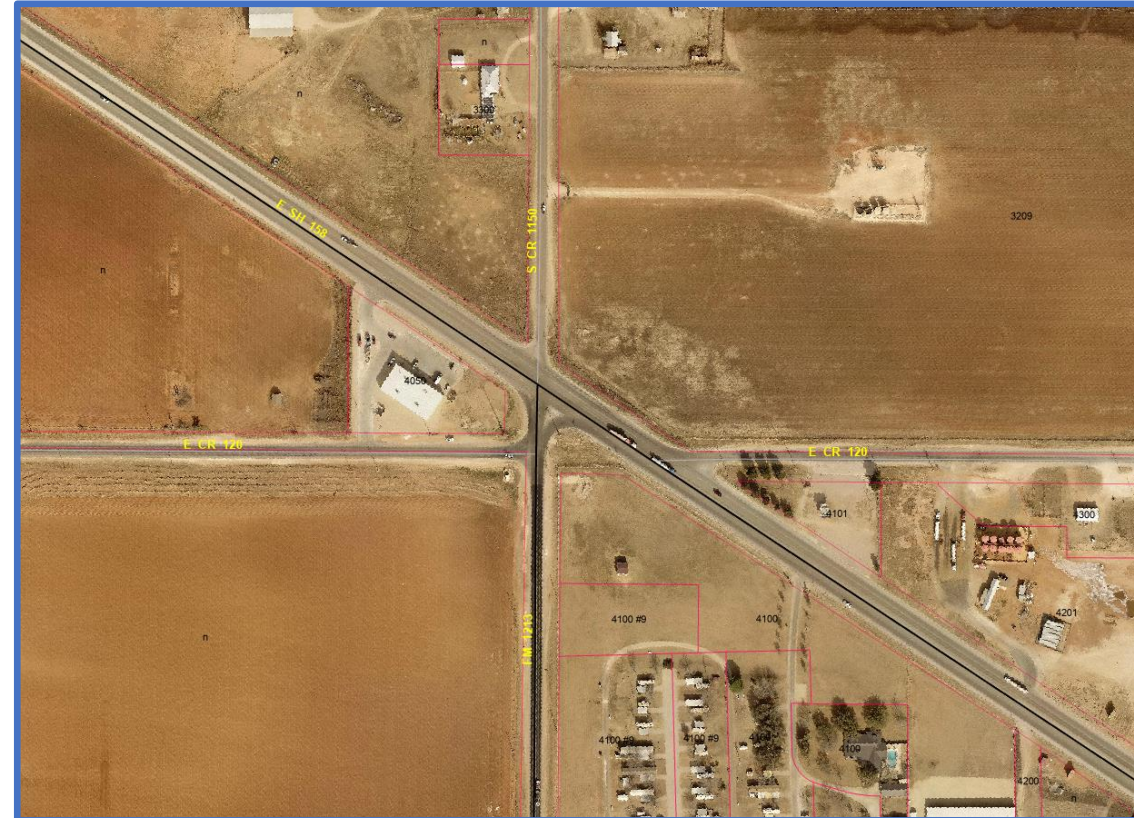
SH 158 at CR 120

*Intersection Improvements,
Reconfigure Intersection*

Existing Conditions:

- 3 closely-spaced intersections
- High speeds / Heavy trucks
- High multi-year crash history

Scored: **#1**
Cost Est.: **\$ 4.0 M**
Project ID: **Not Assigned**



Status: *Not Started*

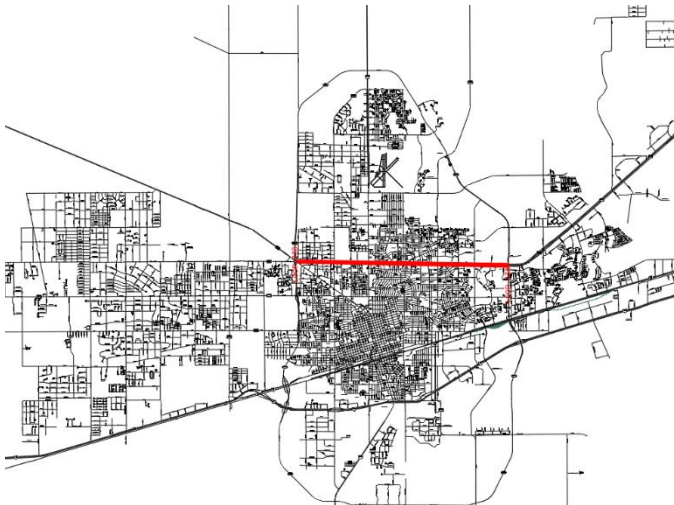


SH 191 (42nd St) LOOP 338 W TO LOOP 338 E

Project includes:

- High crash history
- Consolidate driveways
- Access management

- SCORED: #2
- COST EST: \$6M
- PROJECT ID: RC-151,
RC-152,
RC-153, RC-154



STATUS: Not Started



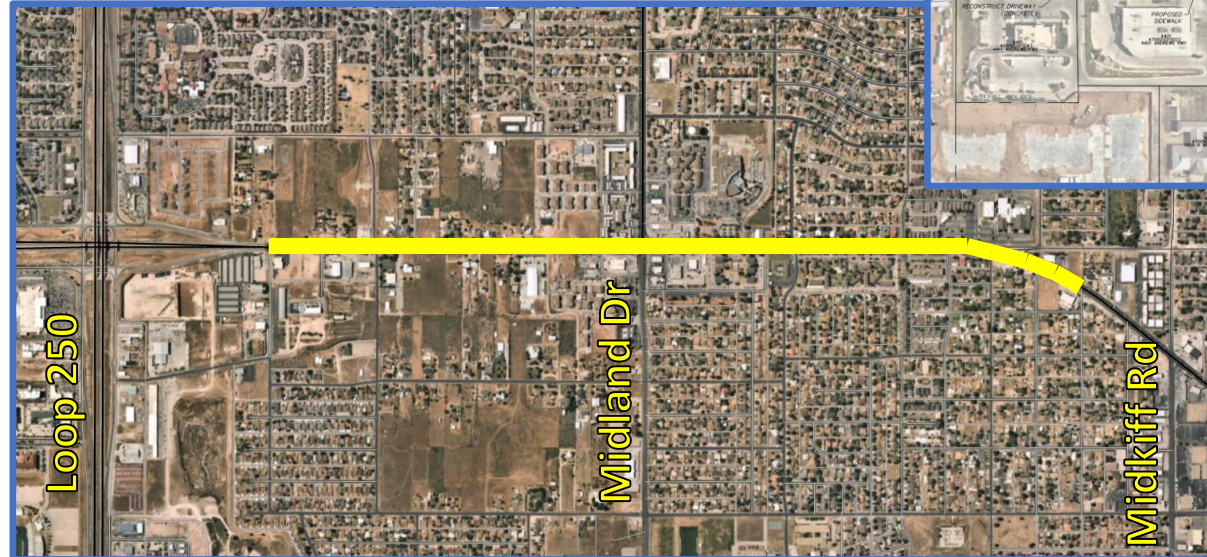
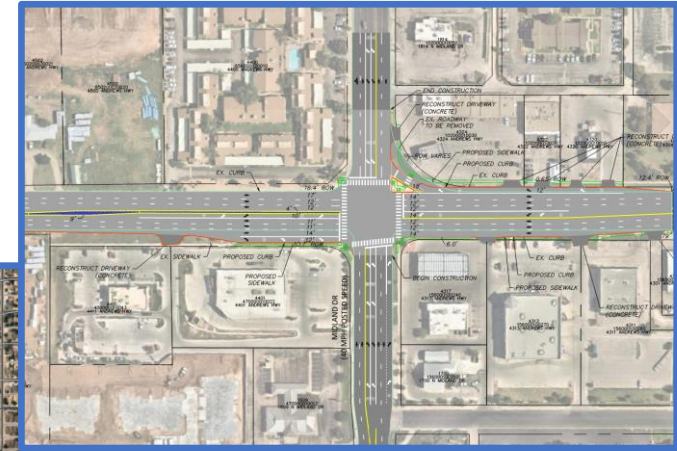
BS 158 (Andrews Hwy) at FM 868 (Midland Dr)

Scored: #3
Cost Est.: \$3.6 M
Project ID: RC-232

Intersection Improvements, Corridor Capacity Improvements

Project includes:

- Access management
- Restripe for 6 lanes
- Rebuild traffic signal



Status: In Design
(by City, approx. 25% complete)



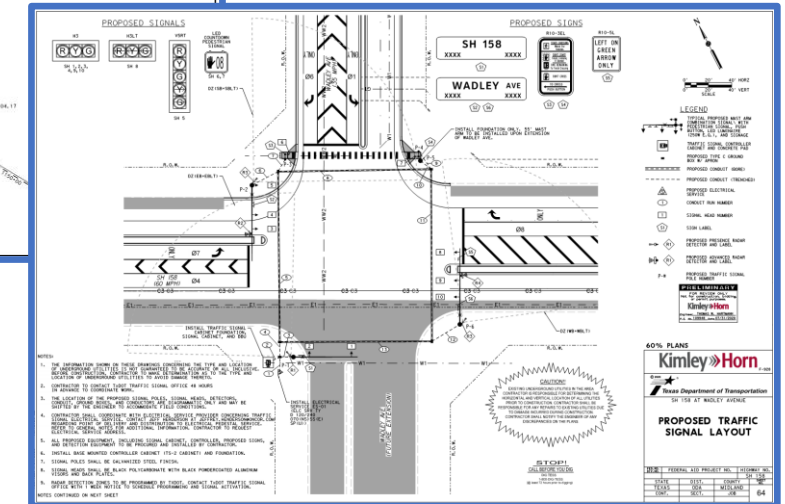
SH 158 at Wadley Ave

Scored: **#4**
Cost Est.: **\$ 3.6 M**
Project ID: **RC-234**
CSJ 0463-02-080

Intersection Improvements, New Traffic Signal

Project includes:

- New intersection / medians
(roadway extension 100% by City)
- New traffic signal



Status: In Design
(by City/MDC, approx. 90% complete)



BI-20 at CR 1250

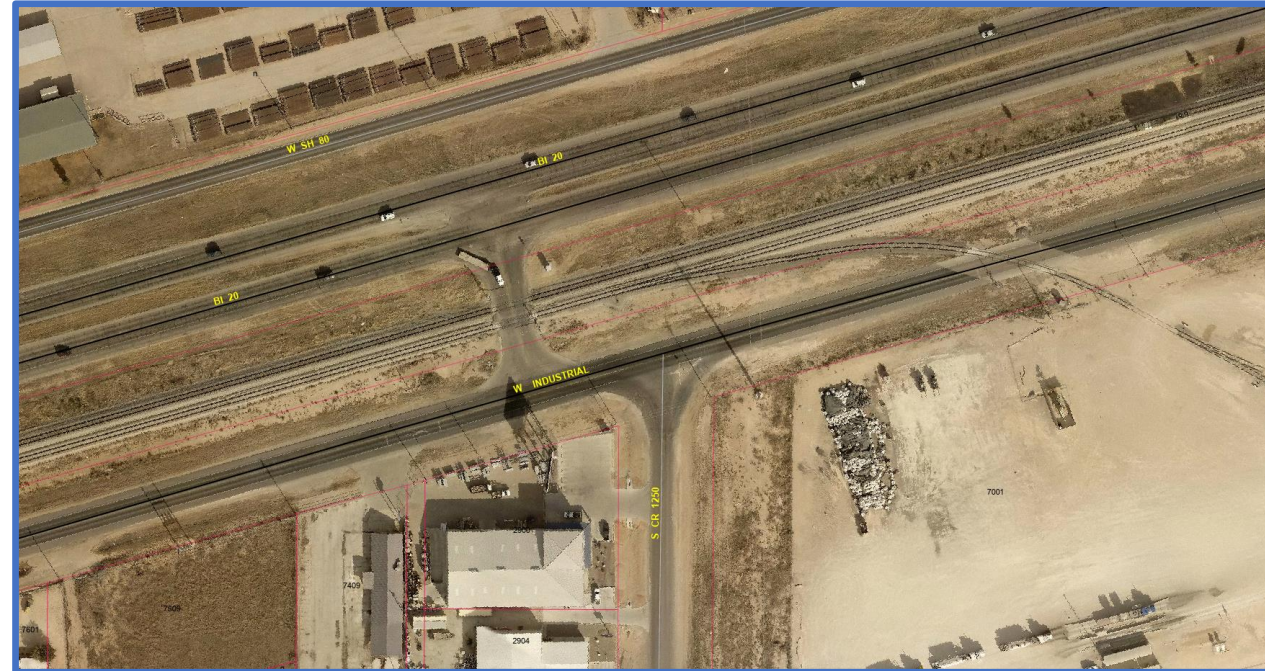
Scored: #5
Cost Est.: \$6.0M
Project ID: RC-137

Intersection Improvements, Reconfigure Offset at Railroad Tracks

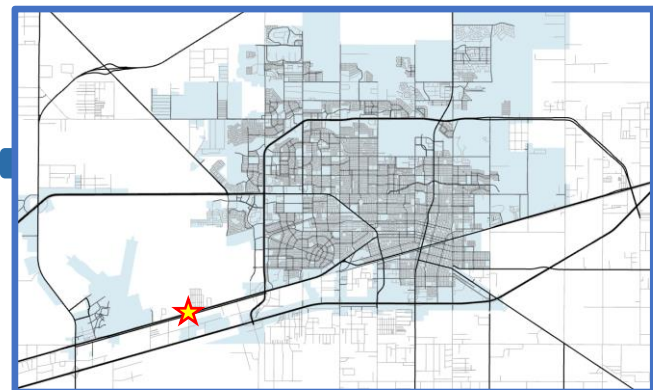
Project includes:

- Relocate at-grade rail crossing
- Widen crossing for future 5-lanes

*Includes TxDOT Rail Division and
Union Pacific funding participation*



Status: In Design
(by TxDOT, approx. 75% complete)

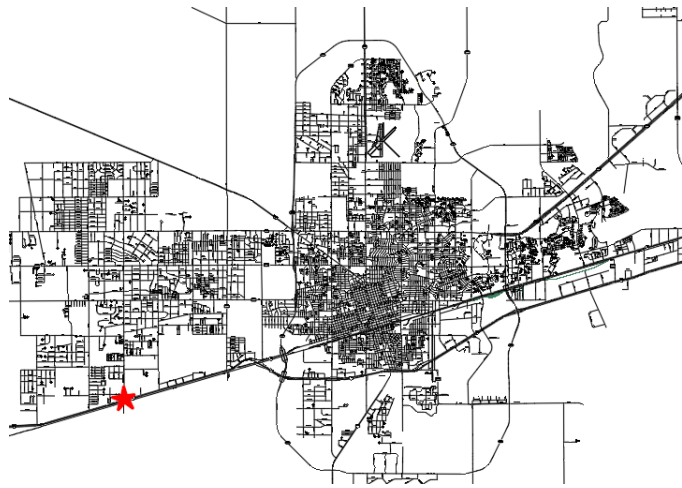


I-20 SERVICE RD / MOSS AVE

Project includes:

- Frontage road congestion (heavy trucks)
- New traffic signals
- Coordination with Union Pacific will be required

- SCORED: #6
- COST EST: \$0.75M
- PROJECT ID: Not Assigned



STATUS: Not Started



BI-20 (Wall St) at Avalon Dr

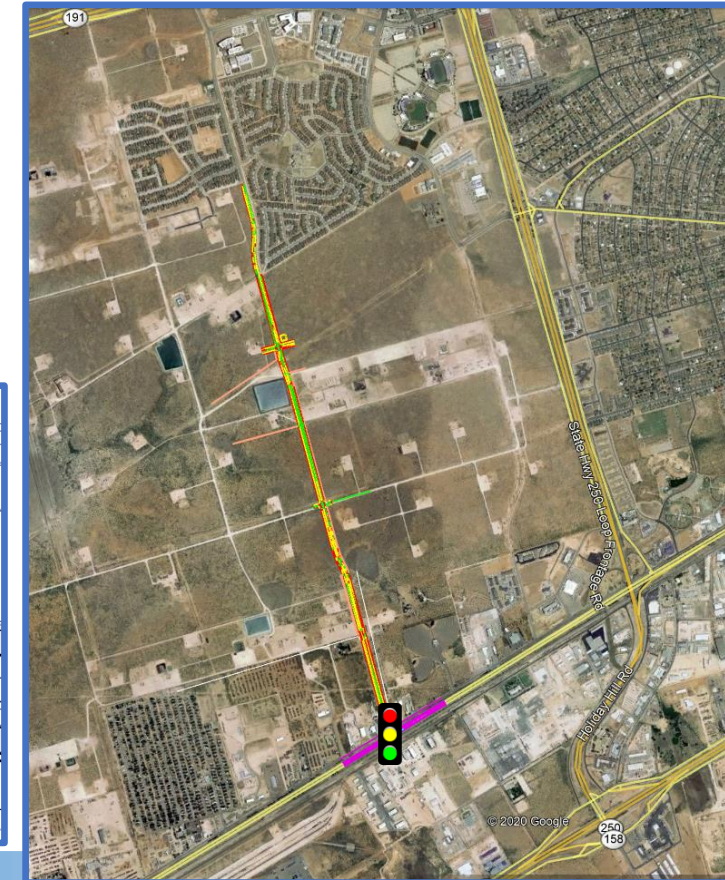
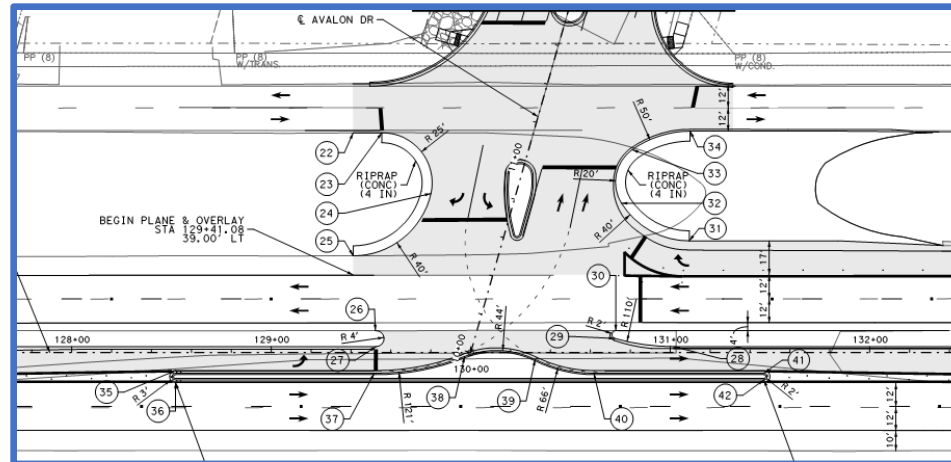
Scored: #7
Cost Est.: \$3.0M
Project ID: RC-235

Intersection Improvements, New Traffic Signal

Project includes:

- New Florida-T intersection (new roadway 100% by City)
- New traffic signal

*Provides reliever for
Loop 250 at BI-20*



Status: In Design
(by City, approx. 90% complete)

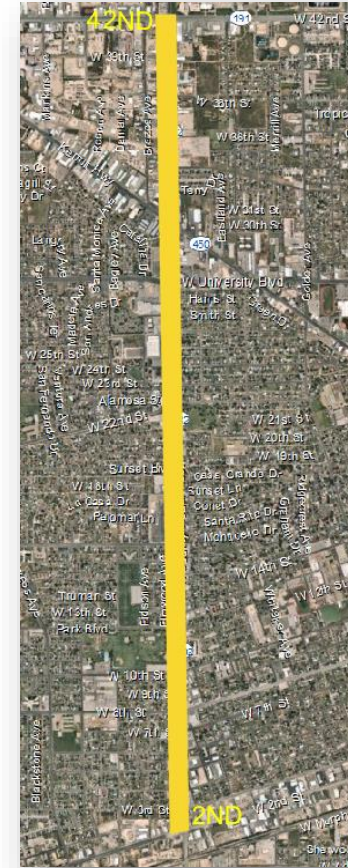
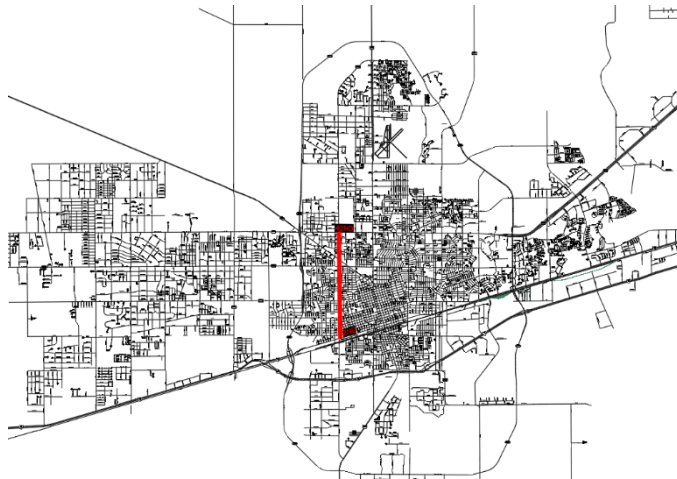


FM 1882 (County Rd West) BI-20 (2nd St) TO SH 191 (42nd St)

Project includes:

- Consolidate driveways
- Access management

- SCORED: #8
- COST EST: \$6M
- PROJECT ID: Not Assigned



STATUS: Not Started



SH 158 at CR 60 / Briarwood Ave

Scored: #9
Cost Est.: \$3.6 M
Project ID: RC-236
CSJ 0463-02-079

Intersection Improvements, New Traffic Signal

Project includes:

- Widening intersection for turn lanes
- Raised median
- New traffic signal

Includes TxDOT safety grant funding



Status: In Design
(by City/MDC, approx. 90% complete)

